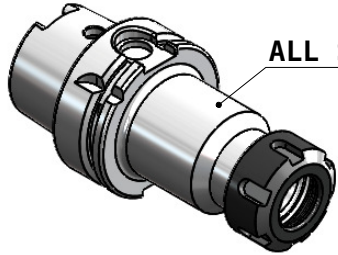
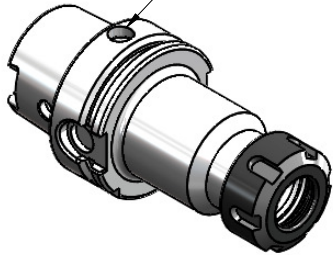


All Dimensions are in MM

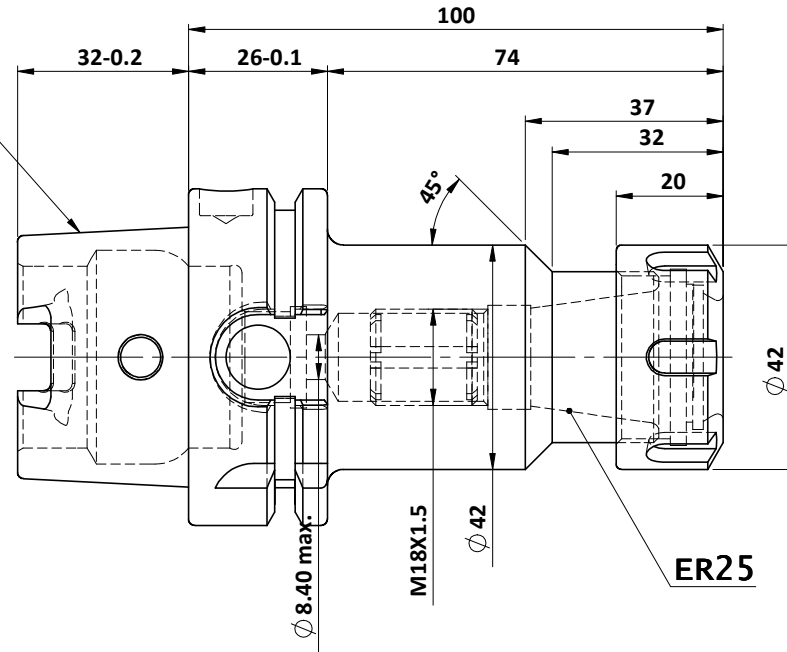
ALL SILVER LOOK



CHIP HOLE



DIN 69893
FORM A
(HKA63)



ER25

Rev.No.	Ch.Let	Alterations	Date	Sign.	Appd.

Label :

2002269.0501
SPANNZANGENAUFNAHME ER COLLET CHUCK

MARKING : DIN 69893 A HSK63A CCHER25 H100

BALANCING 2.5G AT 25000 RPM

WEIGHT : 1.07kg

ITEM NO.	PART NUMBER	DESCRIPTION	QTY.
1	SCWM18X1.5	STOPPER SCREW	1
2	NUTER25	COLLET NUT	1
3	FWA063H-ERS25100	COLLET CHUCK HOLDER	1

μm	0.012	0.025	0.05	0.1	0.2	0.4	0.8	1.6	3.2	6.3	12.5	25	50
GRADES	N1	N2	N3	N4	N5	N6	N7	N8	N9	N10	N11	N12	
SYMBOLS	▽▽▽▽▽▽▽▽▽▽▽▽▽												
TOLERANCE	MATERIALS:			2017	NAME	DATE	WEMAG 2002269.0501						
FREE DIMENSIONS	16MnCr5			DRAWN	SVK	17/08							
TOLERANCE				CHECKED	RVL	17/08							
				APPROVED									
Dimns.	Dia	Length		SCALE: 2:1		QTY.:	PART NAME:		DRAWING No.		REV.		
0.5 to 3	± 0.05	± 0.10					HSKA63CCHER25100WW		FWA063H-ERS25100		00		
3 to 6	± 0.10	± 0.15											
6 to 30	± 0.15	± 0.20											
30 to 120	± 0.20	± 0.25											
120 to 500	± 0.30	± 0.50											