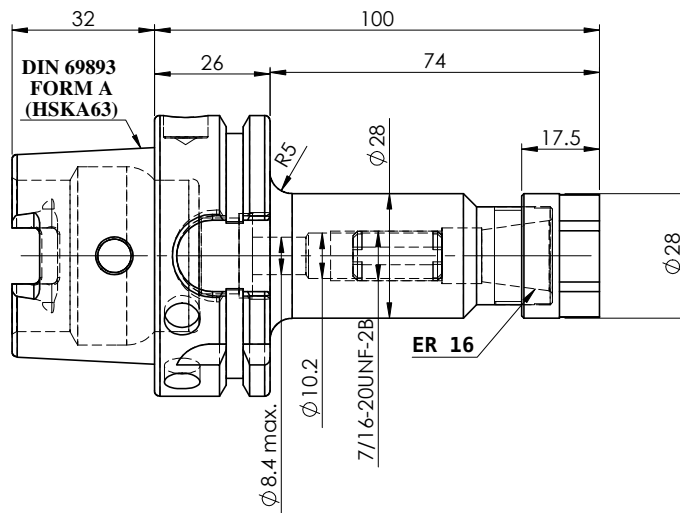
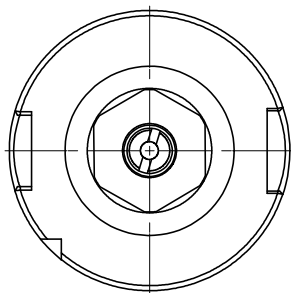
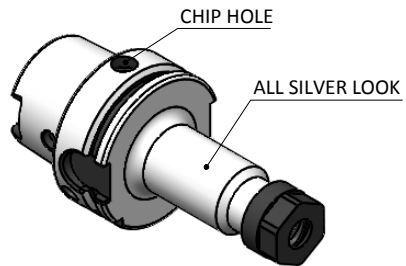


All Dimensions are in MM



LABEL :

**2002269.0301
 SPANNZANGENAUFNAHME ER COLLET CHUCK
 HEXOGONAL NUT**

MARKING : DIN 69893 A HSK63A CCHER16 H100

BALANCING G2.5 AT 25000RPM

WEIGHT : 0.9 Kg

ITEM NO.	PART NUMBER	DESCRIPTION	QTY.
1	FWA063H-ERS16100	HSKA63CCHER16100WW	1
2	NUTER16	COLLET NUT	1
3	STCW7/16-UNF 2B	STOPPER SCREW	1

Rev.No.	Ch.Let	Alterations	Date	Sign.	Appd.

TOLERANCE		μ m																																			
0.5 to 3	± 0.05 ± 0.10	0.012	0.025	0.05	0.1	0.2	0.4	0.8	1.6	3.2	6.3	12.5	25	50																							
3 to 6	± 0.10 ± 0.15	N1			N2			N3			N4			N5			N6			N7			N8			N9			N10			N11			N12		
6 to 30	± 0.15 ± 0.20	SYMBOLS																																			
30 to 120	± 0.20 ± 0.25	<table border="1"> <tr> <th colspan="2">MATERIALS:</th> <th>2017</th> <th>NAME</th> <th>DATE</th> </tr> <tr> <td colspan="2">16MnCr5</td> <td>DRAWN</td> <td>SVK</td> <td>17/08</td> </tr> <tr> <td colspan="2">TOLERANCE FREE DIMENSIONS TOLERANCE</td> <td>CHECKED</td> <td>RVL</td> <td>17/08</td> </tr> <tr> <td colspan="2">120 to 500</td> <td colspan="3">APPROVED</td> </tr> </table>												MATERIALS:		2017	NAME	DATE	16MnCr5		DRAWN	SVK	17/08	TOLERANCE FREE DIMENSIONS TOLERANCE		CHECKED	RVL	17/08	120 to 500		APPROVED						
MATERIALS:		2017	NAME	DATE																																	
16MnCr5		DRAWN	SVK	17/08																																	
TOLERANCE FREE DIMENSIONS TOLERANCE		CHECKED	RVL	17/08																																	
120 to 500		APPROVED																																			
PART NAME:		SCALE : NTS QTY. :																																			
DRAWING No.		REV.																																			

**WEMAG
 2002269.0301**

HSKA63CCHER16100WW

FWA063H-ERS16100

00