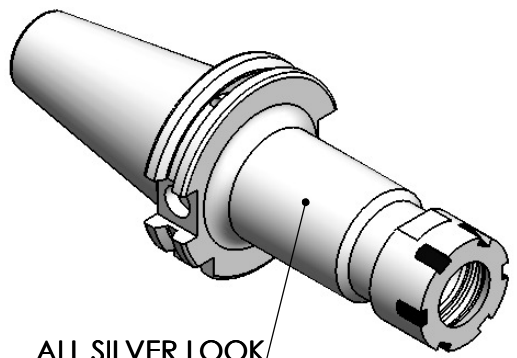
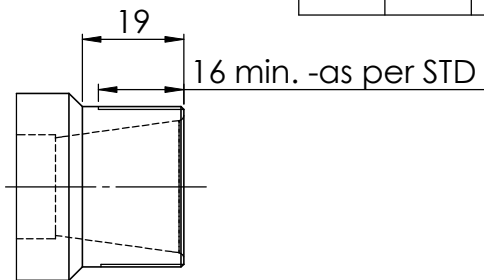


Rev.No.	Ch.Let	Alterations	Date	Sign.	Appd.

All Dimensions are in MM



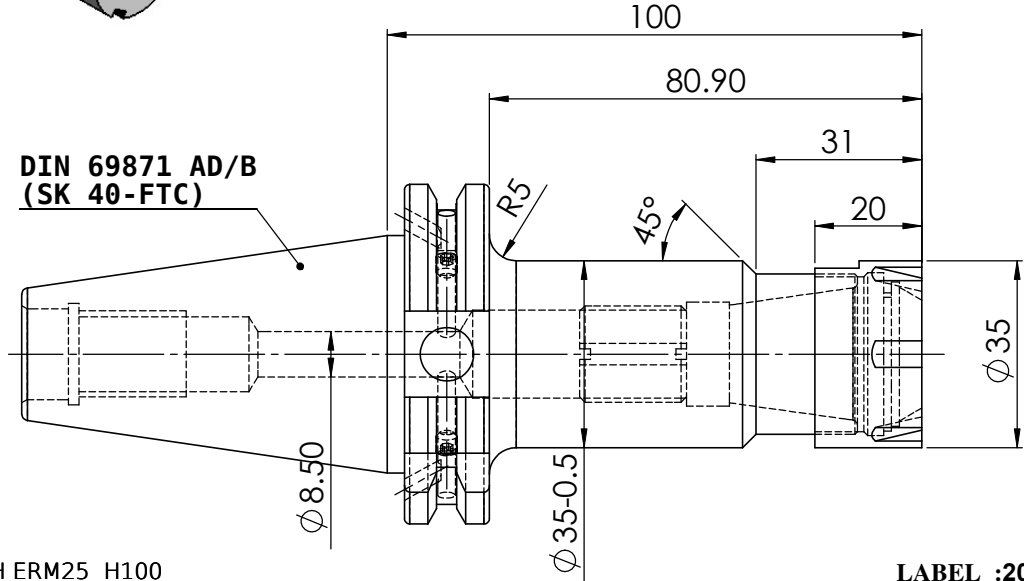
ALL SILVER LOOK



CUSTOMER APPROVAL REQUIRED	
APPROVED BY	
DATE	

FOR QUOTATION PURPOSE ONLY

DIN 69871 AD/B
(SK 40-FTC)



MARKING : DIN 69871 AD/B SK40 CCH ERM25 H100
G2.5 25000 U/MIN

NOTE :

BALANCING 2.5G AT 25000 RPM

WEIGHT : 1.2 kgs.

LABEL :2002262.0501
Spannzangenaufnahme
ER collet chuck
DIN69871 SK40 AD/B
ER25Mx 100 mm
G2,5 / 25000 U/MIN

ITEM NO.	PART NUMBER	DESCRIPTION	QTY.
1	FTNUTER25M	COLLET NUT(B.O)	1
2	GS-M4X4	GRUB SCREW-(B.O.)	2
3	SK40 CCH ER 25 100M F WW	COLLET CHUCK HOLDER	1
4	FTSCWM18X1.5	STOPPER SCREW	1

µ m	0.012	0.025	0.05	0.1	0.2	0.4	0.8	1.6	3.2	6.3	12.5	25	50
GRADES	N1	N2	N3	N4	N5	N6	N7	N8	N9	N10	N11	N12	
SYMBOLS	▽	▽	▽	▽	▽	▽	▽	▽	▽	▽	▽	▽	~
TOLERANCE	MATERIALS:			2015	NAME	DATE	WEMAG 2002262.0501						
FREE DIMENSIONS	16MnCr5			DRAWN	ELA	29/09							
TOLERANCE	TOLERANCE			CHECKED	RVL	29/09							
Dimns.	Dia	Length		APPROVED									
0.5 to 3	± 0.05	± 0.10		SCALE : NTS QTY. :									
3 to 6	± 0.10	± 0.15		PART NAME:									
6 to 30	± 0.15	± 0.20		COLLET CHUCK HOLDER									
30 to 120	± 0.20	± 0.25		DRAWING No.									
120 to 500	± 0.30	± 0.50		SK40 CCHER25 100M FTC WW									
							REV.						00