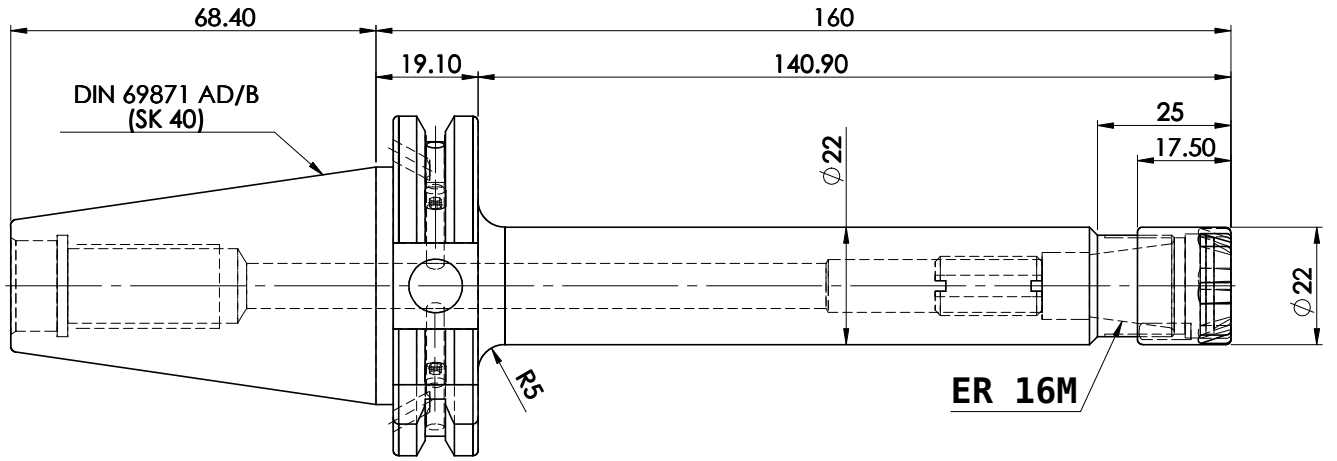
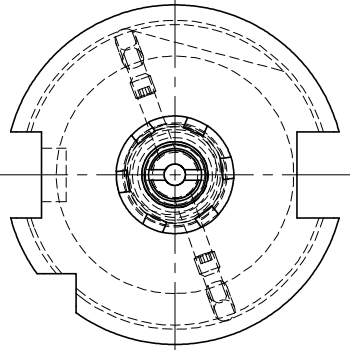
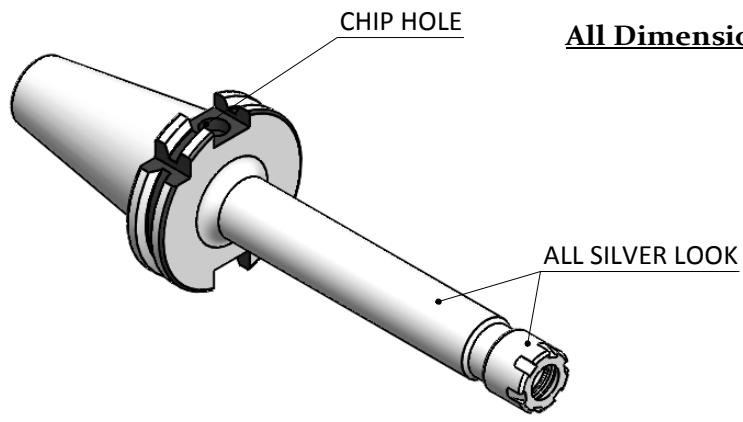


**All Dimensions are in MM**

5	6	7	8
Rev.No.	Ch.Let	Alterations	Date



**LABEL :**

2002262.0302  
 Spannzangenaufnahme  
 ER Collet chuck holder  
 ISO 7388-1 (DIN 69871) SK40 AD/AF (AD+B)  
 ER16M X 160 mm  
 G 2,5 25000 U/MIN

**NOTE:**  
**WEIGHT : 1.1 Kg**

**MARKING : ISO 7388-1 (DIN 69871) SK40 AD/AF (AD+B) CCH ER16M H160  
 G2.5 25000 U/MIN**

**BALANCING 2.5G @ 25000 RPM**

ITEM NO.	PART NUMBER	DESCRIPTION	QTY.
1	FWS409H-ERM16160	SK40CCHER16160MFWW	1
2	FTNUTER16M	COLLET NUT	1
3	GS-M4X4	GRUB SCREW-(B.O.)	2
4	SCW7/16-20UNF	STOPPER SCREW	1

μm	0.012	0.025	0.05	0.1	0.2	0.4	0.8	1.6	3.2	6.3	12.5	25	50
GRADES	N1	N2	N3	N4	N5	N6	N7	N8	N9	N10	N11	N12	
SYMBOLS	▽▽▽			▽▽▽			▽▽▽			▽			~
TOLERANCE	MATERIALS:			2014	NAME	DATE	<b>WEMAG</b> <b>2002262.0302</b>						
FREE DIMENSIONS	16MnCr5			DRAWN	Bala	26/07							
TOLERANCE				CHECKED	RVL	26/07							
				APPROVED									
Dimns.	Dia	Length	PART NAME:			SCALE: NTS QTY.:		DRAWING No.					REV.
0.5 to 3	± 0.05	± 0.10	SK40CCHER16160MFWW					FWS409H-ERM16160					01
3 to 6	± 0.10	± 0.15											
6 to 30	± 0.15	± 0.20											
30 to 120	± 0.20	± 0.25											
120 to 500	± 0.30	± 0.50											