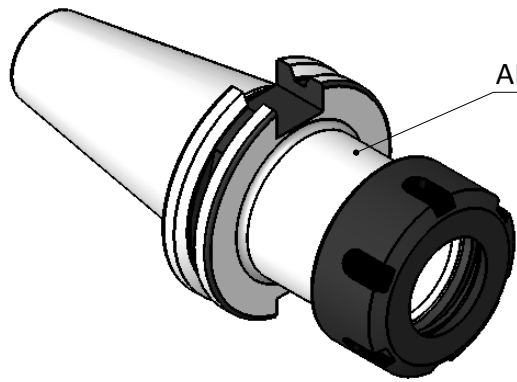


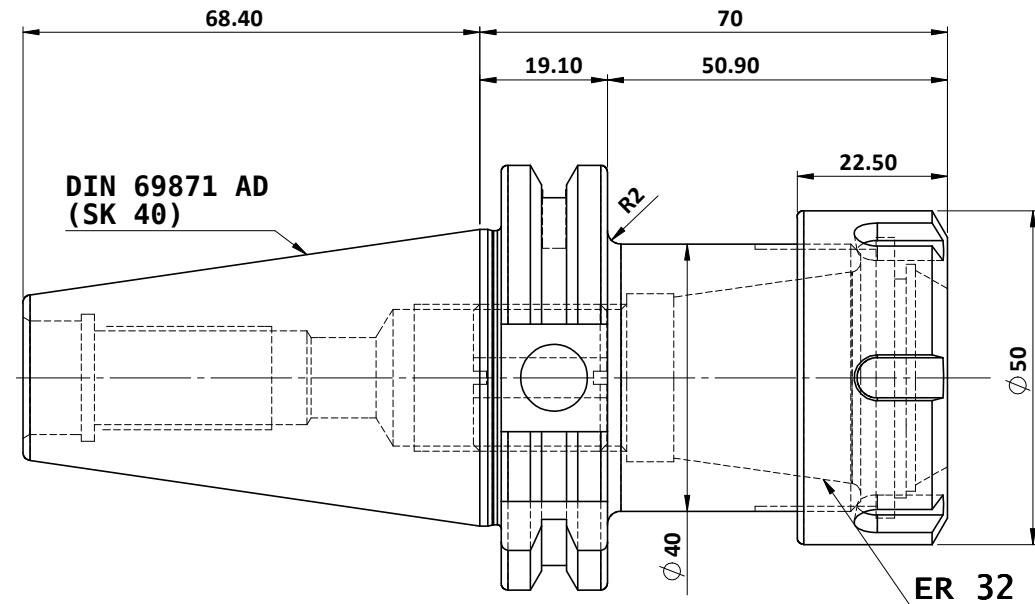
**All Dimensions are in MM**

Rev.No.	Ch.Let	Alterations	Date	Sign.	Appd.



<b>CUSTOMER APPROVAL REQUIRED</b>	
APPROVED BY	
DATE	

**FOR QUOTATION PURPOSE ONLY**



**LABEL :**  
**2002261.0600**  
 Spannzangenfutter ER  
 collet chuck holder  
 DIN69871 AD SK40  
 ER32 x 70 mm  
 G6.3 / 15000

**MARKING :** DIN 69871 AD SK40 CCH ER32 H070  
 G6.3 15000 U/MIN

**WEIGHT :1 Kg.**

**BALANCING 6.3G @ 15000 RPM**

ITEM NO.	PART NUMBER	DESCRIPTION	QTY.
1	SCWM22X1.5	STOPPER SCREW-(B.O)	1
2	FTNUTER32	COLLET NUT - ER32	1
3	SK40 CCH ER32 070 WW	COLLET CHUCK HOLDER	1

μ m	0.012	0.025	0.05	0.1	0.2	0.4	0.8	1.6	3.2	6.3	12.5	25	50											
GRADES	N1		N2		N3		N4		N5		N6		N7		N8		N9		N10		N11		N12	
SYMBOLS	▽▽▽		▽▽▽		▽▽▽		▽▽▽		▽▽▽		▽▽▽		▽▽▽		▽▽▽		▽▽▽		▽▽▽		▽▽▽		▽▽▽	
TOLERANCE	FREE DIMENSIONS		TOLERANCE		MATERIALS:		2016		NAME		DATE		<p align="center"><b>WEMAG</b>  <b>2002261.0600</b></p> <p>DRAWING No. <b>SK40 CCH ER32 070 WW</b></p>											
Dimns.	Dia	Length	16MnCr5		DRAWN		ELA		22/02															
0.5 to 3	± 0.05	± 0.10	16MnCr5		CHECKED		RVL		22/02															
3 to 6	± 0.10	± 0.15	16MnCr5		APPROVED		SCALE :		NTS		QTY. :													
6 to 30	± 0.15	± 0.20	16MnCr5		PART NAME:		COLLET CHUCK HOLDER		DRAWING No.		SK40 CCH ER32 070 WW		REV.		00									
30 to 120	± 0.20	± 0.25	16MnCr5		PART NAME:		COLLET CHUCK HOLDER		DRAWING No.		SK40 CCH ER32 070 WW		REV.		00									
120 to 500	± 0.30	± 0.50	16MnCr5		PART NAME:		COLLET CHUCK HOLDER		DRAWING No.		SK40 CCH ER32 070 WW		REV.		00									