

All Dimensions are in MM

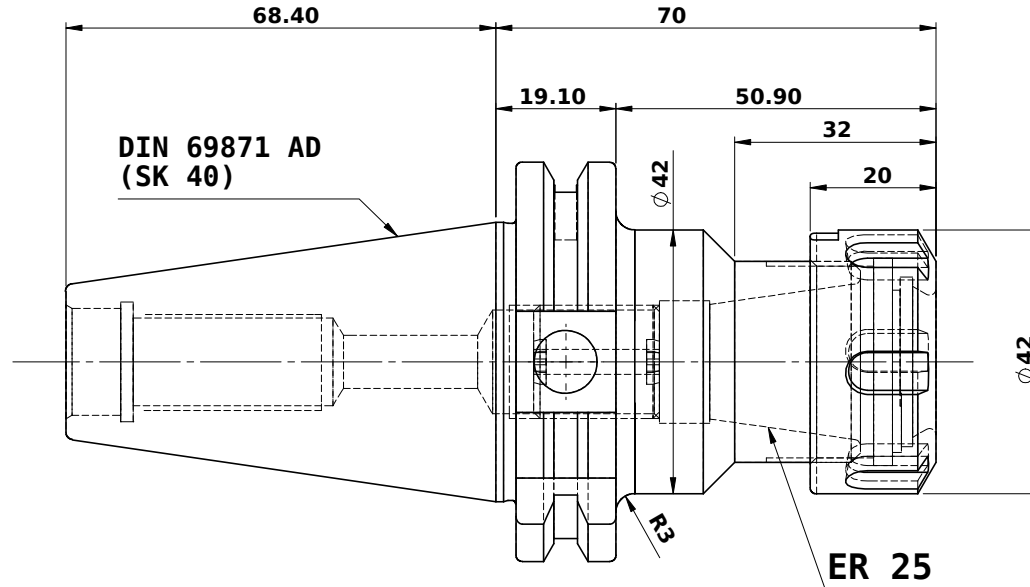
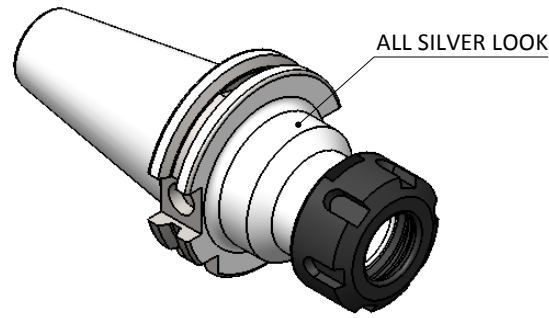
Rev.No.	Ch.Let	Alterations	Date	Sign.	Appd.

CUSTOMER APPROVAL REQUIRED

APPROVED BY

DATE

FOR QUOTATION PURPOSE ONLY



LABEL :

2002261.0500
Spannzangenfutter ER
collet chuck holder
DIN69871 AD SK40
ER25 x 70 mm
G6.3 / 15000

WEIGHT :1 Kg.

BALANCING 6.3G @ 15000 RPM

MARKING : DIN 69871 AD SK40 CCH ER25 H070
G6.3 15000 U/MIN

ITEM NO.	PART NUMBER	DESCRIPTION	QTY.
1	SK40 CCH ER25 070 WW	COLLET CHUCK HOLDER	1
2	FTNUTER25	COLLET NUT	1
3	FTSCWM18X1.5	STOPPER SCREW	1

μ m	0.012	0.025	0.05	0.1	0.2	0.4	0.8	1.6	3.2	6.3	12.5	25	50	
GRADES	N1	N2	N3	N4	N5	N6	N7	N8	N9	N10	N11	N12		
SYMBOLS	▽	▽	▽	▽	▽	▽	▽	▽	▽	▽	▽	▽	~	
TOLERANCE FREE DIMENSIONS TOLERANCE	MATERIALS:			2016	NAME	DATE	WEMAG 2002261.0500							
Dimns.	Dia	Length	16MnCr5		DRAWN	ELA								22/02
0.5 to 3	± 0.05	± 0.10			CHECKED	RVL								22/02
3 to 6	± 0.10	± 0.15			APPROVED									
6 to 30	± 0.15	± 0.20			SCALE :	NTS	QTY. :							
30 to 120	± 0.20	± 0.25			PART NAME:			DRAWING No.						
120 to 500	± 0.30	± 0.50			COLLET CHUCK HOLDER			SK40 CCH ER25 070 WW						
							REV.							
							00							