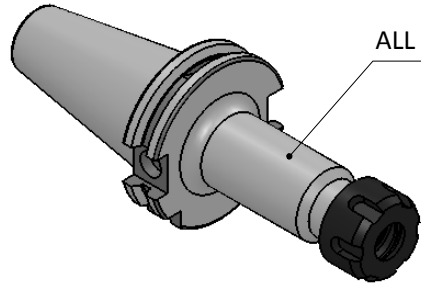


All Dimensions are in MM



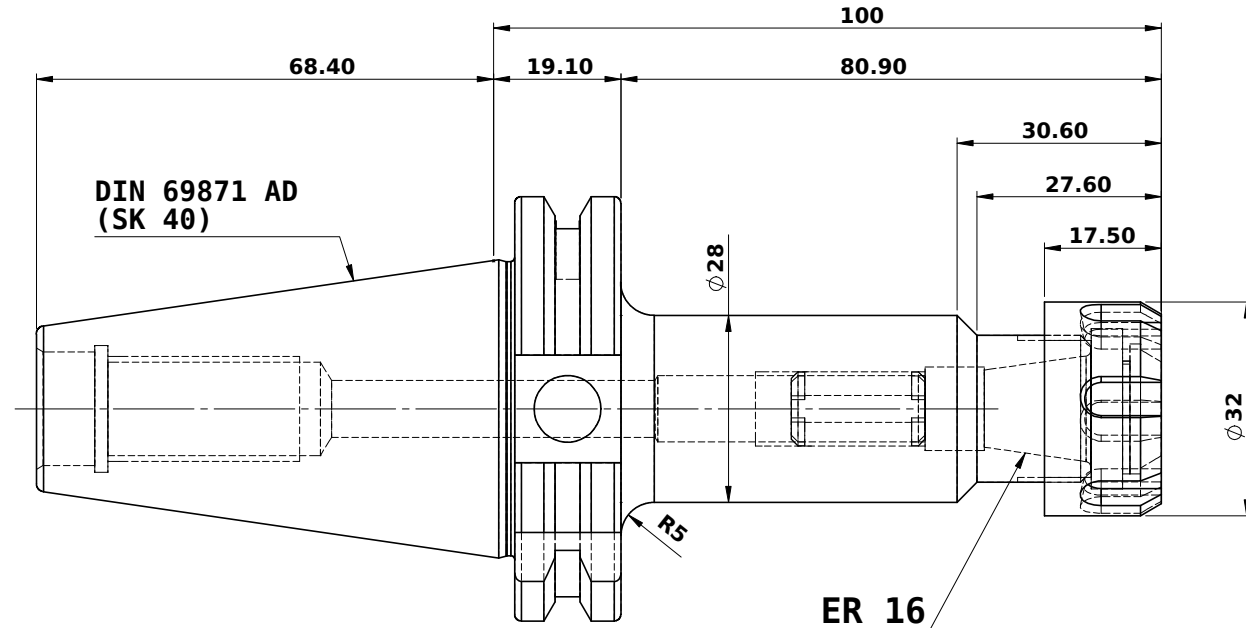
ALL SILVER LOOK

CUSTOMER APPROVAL REQUIRED

APPROVED BY

DATE

FOR QUOTATION PURPOSE ONLY



ER 16

MARKING : DIN 69871 AD SK40 CCH ER16 H100
G63 15000 U/MIN

BALANCING 6.3G @ 15000 RPM

LABEL :2002261.0301
Spannzangenfutter
ER collet chuck holder
DIN69871 SK40 AD
ER16 x 100 mm
G6.3 / 15000

WEIGHT :1.1 Kg.

ITEM NO.	PART NUMBER	DESCRIPTION	QTY.
1	SK40CCHER16100WW	COLLET CHUCK HOLDER	1
2	NUTER16 DIN 6499	COLLET NUT (B.O.)	1
3	SCW7/16-20UNF	STOPPER SCREW (B.O.)	1

Rev.No.	Ch.Let	Alterations	Date	Sign.	Appd.

μ m	0.012	0.025	0.05	0.1	0.2	0.4	0.8	1.6	3.2	6.3	12.5	25	50											
GRADES	N1		N2		N3		N4		N5		N6		N7		N8		N9		N10		N11		N12	
SYMBOLS	▽▽▽		▽▽▽		▽▽▽		▽▽▽		▽▽▽		▽▽▽		▽▽▽		▽▽▽		▽▽▽		▽▽▽		▽▽▽		▽▽▽	
TOLERANCE FREE DIMENSIONS TOLERANCE		MATERIALS:		2016		NAME		DATE		2002261.0301														
Dimns. Dia Length		16MnCr5		DRAWN		ELA		19/03																
0.5 to 3 ± 0.05 ± 0.10		3 to 6 ± 0.10 ± 0.15		CHECKED		RVL		19/03																
6 to 30 ± 0.15 ± 0.20		30 to 120 ± 0.20 ± 0.25		APPROVED		SCALE : NTS		QTY. :																
120 to 500 ± 0.30 ± 0.50		PART NAME:						DRAWING No.						REV.										
		COLLET CHUCK HOLDER						SK40CCHER16100WW						01										