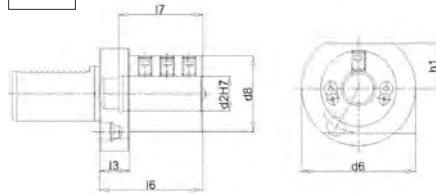


Form E2 für Bohrstanzen

Ausführung: Schaft und Anlagefläche gehärtet und geschliffen, Kühlmittelübergabebohrung.

Anwendung: Für Bohrstanzen.

DIN 69880



| | | fortis 3298 | | | | | | Bestell-Nr. |
|-----|----|-------------|----|----|----|----|--------|-------------|
| VDI | d2 | d6 | d8 | l1 | l3 | l6 | E2 | |
| | mm | mm | mm | mm | mm | mm | € | |
| 30 | 6 | 68 | 55 | 60 | 22 | 43 | 86,00 | ...0001 |
| 30 | 8 | 68 | 55 | 60 | 22 | 43 | 81,50 | ...0004 |
| 30 | 10 | 68 | 55 | 60 | 22 | 43 | 81,50 | ...0007 |
| 30 | 12 | 68 | 55 | 60 | 22 | 43 | 81,30 | ...0010 |
| 30 | 16 | 68 | 55 | 60 | 22 | 55 | 81,50 | ...0013 |
| 30 | 20 | 68 | 55 | 60 | 22 | 54 | 78,00 | ...0016 |
| 30 | 25 | 68 | 55 | 60 | 22 | 54 | 78,00 | ...0019 |
| 30 | 32 | 68 | 67 | 75 | 22 | 61 | 81,90 | ...0022 |
| 30 | 40 | 68 | 67 | 75 | 22 | 66 | 102,00 | ...0025 |
| 40 | 6 | 83 | 55 | 75 | 22 | 43 | 95,60 | ...0028 |
| 40 | 8 | 83 | 55 | 75 | 22 | 43 | 91,00 | ...0031 |
| 40 | 10 | 83 | 55 | 75 | 22 | 43 | 91,00 | ...0034 |
| 40 | 12 | 83 | 55 | 75 | 22 | 58 | 91,00 | ...0037 |

(W060)

| | | fortis 3298 | | | | | | Bestell-Nr. |
|-----|----|-------------|----|-----|----|----|--------|-------------|
| VDI | d2 | d6 | d8 | l1 | l3 | l6 | E2 | |
| | mm | mm | mm | mm | mm | mm | € | |
| 40 | 16 | 83 | 55 | 75 | 22 | 61 | 87,30 | ...0040 |
| 40 | 20 | 83 | 55 | 75 | 22 | 61 | 86,90 | ...0043 |
| 40 | 25 | 83 | 55 | 75 | 22 | 61 | 91,00 | ...0046 |
| 40 | 32 | 83 | 82 | 75 | 22 | 61 | 91,00 | ...0049 |
| 40 | 40 | 83 | 82 | 90 | 22 | 76 | 92,00 | ...0052 |
| 40 | 50 | 98 | 98 | 100 | 22 | 86 | 95,60 | ...0055 |
| 50 | 12 | 98 | 68 | 90 | 30 | 71 | 104,50 | ...0058 |
| 50 | 16 | 98 | 68 | 90 | 30 | 76 | 104,50 | ...0061 |
| 50 | 20 | 98 | 68 | 90 | 30 | 76 | 104,50 | ...0064 |
| 50 | 25 | 98 | 68 | 90 | 30 | 76 | 104,50 | ...0067 |
| 50 | 32 | 98 | 69 | 90 | 30 | 76 | 104,00 | ...0070 |
| 50 | 40 | 98 | 98 | 90 | 30 | 76 | 104,00 | ...0073 |
| 50 | 50 | 98 | 98 | 100 | 30 | 86 | 105,00 | ...0076 |

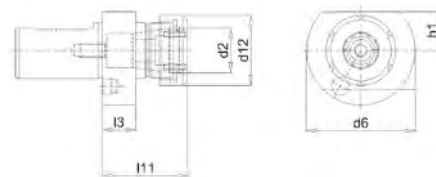
(W060)

Form E4 für Spannzangen

Ausführung: Spannzangenaufnahme ER DIN 6499. Schaft und Anlagefläche gehärtet und geschliffen, Kühlmittelübergabebohrung.

Anwendung: Zur Aufnahme von Werkzeugen in Spannzangen.

DIN 69880



| | | fortis 3299 | | | | | | Bestell-Nr. | |
|-----|-------|-------------|------|----|-----|-----|----|-------------|---------|
| VDI | Größe | h1 | d2 | d6 | d12 | l11 | l3 | E4 | |
| | | mm | mm | mm | mm | mm | mm | € | |
| 30 | ER16 | 28 | 1-10 | 68 | 32 | 48 | 22 | 167,50 | ...0001 |
| 30 | ER25 | 28 | 2-16 | 68 | 42 | 57 | 22 | 153,50 | ...0004 |
| 30 | ER32 | 28 | 2-20 | 68 | 50 | 78 | 22 | 153,50 | ...0007 |
| 30 | ER40 | 28 | 3-30 | 68 | 63 | 80 | 22 | 161,00 | ...0010 |
| 40 | ER25 | 32,5 | 2-16 | 83 | 42 | 57 | 22 | 163,00 | ...0013 |

(W060)

| | | fortis 3299 | | | | | | Bestell-Nr. | |
|-----|-------|-------------|------|----|-----|-----|----|-------------|---------|
| VDI | Größe | h1 | d2 | d6 | d12 | l11 | l3 | E4 | |
| | | mm | mm | mm | mm | mm | mm | € | |
| 40 | ER32 | 32,5 | 2-20 | 83 | 50 | 78 | 22 | 165,00 | ...0016 |
| 40 | ER40 | 32,5 | 3-30 | 83 | 63 | 80 | 22 | 164,00 | ...0019 |
| 50 | ER32 | 35 | 2-20 | 98 | 50 | 92 | 30 | 180,00 | ...0022 |
| 50 | ER40 | 35 | 3-30 | 98 | 63 | 80 | 30 | 174,00 | ...0025 |

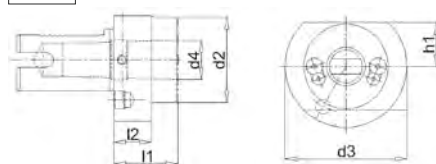
(W060)

Form F mit MK-Aufnahme

Ausführung: Morsekegel. Schaft und Anlagefläche gehärtet und geschliffen, Kühlmittelübergabebohrung.

Anwendung: Zur Aufnahme von Werkzeugen mit Morsekegelschaft.

DIN 69880



| | | fortis 3301 | | | | | | Bestell-Nr. | |
|-----|----|-------------|----|----|--------|----|----|-------------|---------|
| VDI | MK | h1 | d3 | d2 | d4 | l1 | l2 | F | |
| | | mm | mm | mm | mm | mm | mm | € | |
| 30 | 1 | 28 | 68 | - | 12,065 | 27 | - | 92,00 | ...0001 |
| 30 | 2 | 28 | 68 | 55 | 17,78 | 36 | 27 | 94,00 | ...0004 |
| 30 | 3 | 28 | 68 | 55 | 23,825 | 66 | 41 | 96,90 | ...0007 |
| 40 | 1 | 32,5 | 83 | 55 | 12,065 | 26 | 22 | 101,00 | ...0010 |
| 40 | 2 | 32,5 | 83 | 55 | 17,78 | 36 | 22 | 98,80 | ...0013 |
| 40 | 3 | 32,5 | 83 | 58 | 23,825 | 36 | 22 | 101,00 | ...0016 |

(W060)

| | | fortis 3301 | | | | | | Bestell-Nr. | |
|-----|----|-------------|----|----|--------|----|----|-------------|---------|
| VDI | MK | h1 | d3 | d2 | d4 | l1 | l2 | F | |
| | | mm | mm | mm | mm | mm | mm | € | |
| 40 | 4 | 32,5 | 83 | 68 | 31,267 | 80 | 22 | 105,00 | ...0019 |
| 50 | 2 | 35 | 98 | 55 | 17,78 | 36 | 30 | 113,50 | ...0022 |
| 50 | 3 | 35 | 98 | 58 | 23,825 | 45 | 30 | 98,10 | ...0025 |
| 50 | 4 | 35 | 98 | 68 | 31,267 | 55 | 30 | 118,50 | ...0028 |
| 50 | 5 | 35 | 98 | 75 | 44,399 | 72 | 30 | 148,00 | ...0031 |

(W060)