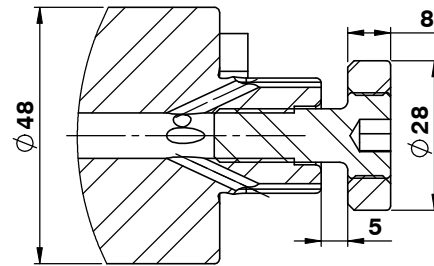


Rev.No.	Ch.Let	Alterations	Date	Sign.	Appd.



FOR QUOTATION PURPOSE ONLY

Technical drawing of a circular mechanical component, likely a bearing or seal, showing a cross-section. The drawing includes the following dimensions and labels:

- 10 h11 (KEY)**: Dimension for the keyway width.
- 44 (KEY)**: Dimension for the keyway depth.
- B**: Dimension for the outer diameter.
- 45°**: Angle of the outer edge.

ED

100

29-0.1

71

19

5.3

3

4

DIN 69893 FORM-A
(HSKA100)

12 max.

48

22 h6

R5

1

2

50-0.2

ITEM NO.	DESCRIPTION	PART NUMBER	QTY.
1	FACE MILL HOLDER	HSKA100 SMS22 100TC B2.5G	1
2	DRIVING KEY	FT KEY 10 22	2
3	ALLEN SCREW	M4X10	2
4	CUTTER CLAMPING SCREW	CCS-M10-22	1

			μm	0.012	0.025	0.05	0.1	0.2	0.4	0.8	1.6	3.2	6.3	12.5	25	50	
			GRADES	N1	N2	N3	N4		N5	N6	N7	N8	N9	N10	N11	N12	
			SYMBOLS														
TOLERANCE			MATERIALS:														
FREE DIMENSIONS			16MnCr5														
TOLERANCE			2013		NAME		DATE		2002381.2201								
			DRAWN		SPJ		01/08										
Dimns.			Dia		Length		01/08										
0.5 to 3			±0.05		±0.10		01/08										
3 to 6			±0.10		±0.15		01/08										
							SCALE : NTS		QTY. :								
6 to 30			±0.15		±0.20		PART NAME:					DRAWING No.					REV.
30 to 120			±0.20		±0.25		FACE MILL HOLDER					HSKA100 SMS22 100TC B2.5G					00
120 to 500			±0.30		±0.50												