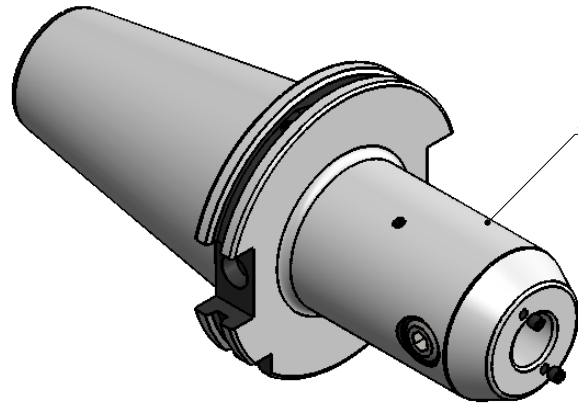
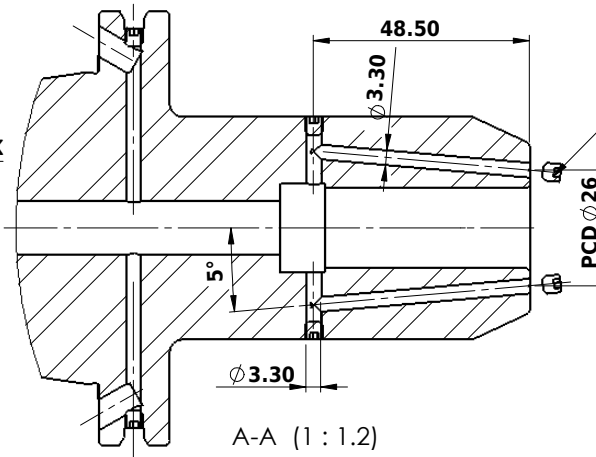


All Dimensions are in MM



ALL SILVER LOOK



SCREWS TO BE PACKED SEPERATELY  
IN PLASTIC POUCH WITH LABEL & PUT INTO  
WELDON BORE & THEN SEAL THE HOLDER WITH COVER

LABEL FOR PLASTIC BAGS:  
Verschlusschraube  
Grub Screw  
M4 X 4mm x 2 mm

CUSTOMER APPROVAL REQUIRED

APPROVED BY

DATE

FOR QUOTATION PURPOSE ONLY

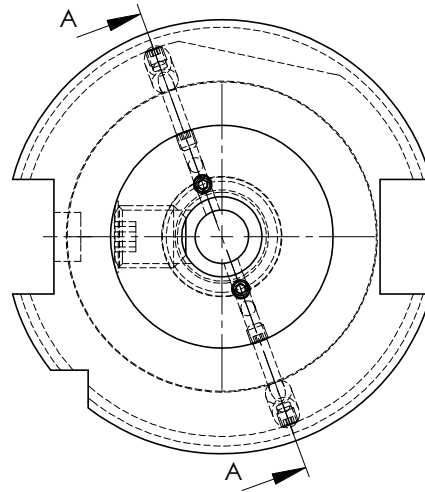
Label :  
2002366.1801  
WELDON-AUFNAHME MIT KK  
WELD.HOLDER COOL.CHANNEL  
DIN69871 SK50 ADB  
Wk 18 mm x 100 mm  
G2.5 / 25000

NOTE :

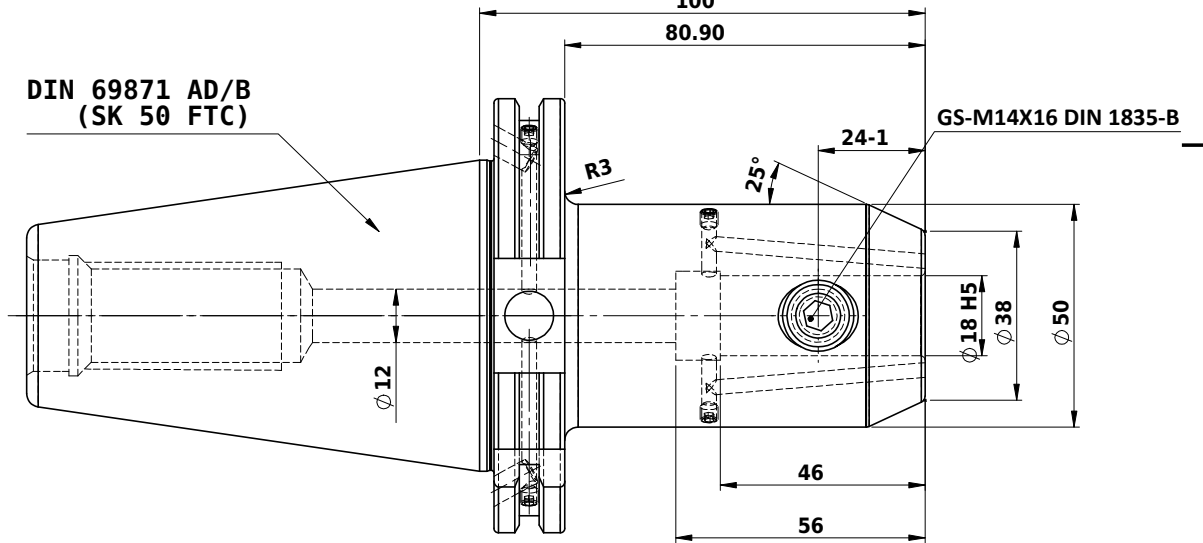
BALANCING 2.5G AT 25000 RPM

WEIGHT : 3.8 kg






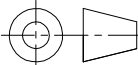
MARKING : DIN 69871 AD/B SK50 WK18H100  
G2.5 25000 U/MIN



DIN 69871 AD/B  
(SK 50 FTC)



ITEM NO.	PART NUMBER	DESCRIPTION	QTY.
1	GS-M4X4	GRUB SCREW-(B.O)	6
2	GS-M14X16-DIN1835-B	GRUB SCREW-(B.O)	1
3	FWS509H-EKH18100	SK50EK18100FWW	1

		μ m	0.012	0.025	0.05	0.1	0.2	0.4	0.8	1.6	3.2	6.3	12.5	25	50	
		GRADES	N1	N2	N3	N4	N5	N6	N7	N8	N9	N10	N11	N12		
		SYMBOLS														
TOLERANCE		MATERIALS:		2017		NAME		DATE		2002366.1801						
FREE DIMENSIONS		16MnCr5		DRAWN		ELA		03/05								
TOLERANCE				CHECKED		RVL		03/05								
				APPROVED				-								
				SCALE : NTS		QTY. :										
Dimns.	Dia	Length														
0.5 to 3	± 0.05	± 0.10														
3 to 6	± 0.10	± 0.15														
6 to 30	± 0.15	± 0.20														
30 to 120	± 0.20	± 0.25														
120 to 500	± 0.30	± 0.50														
PART NAME:									DRAWING No.						REV.	
SK50EK18100FWW									FWS509H-EKH18100						00	