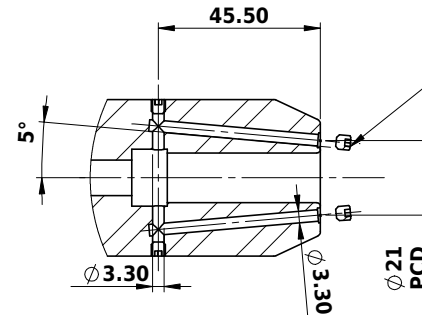
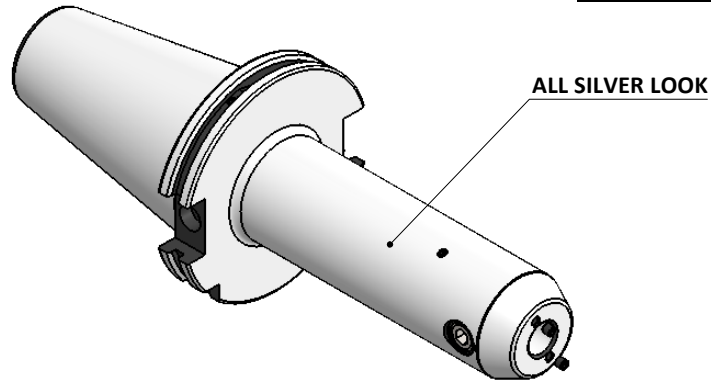


All Dimensions are in MM



A-A (1:1.5)

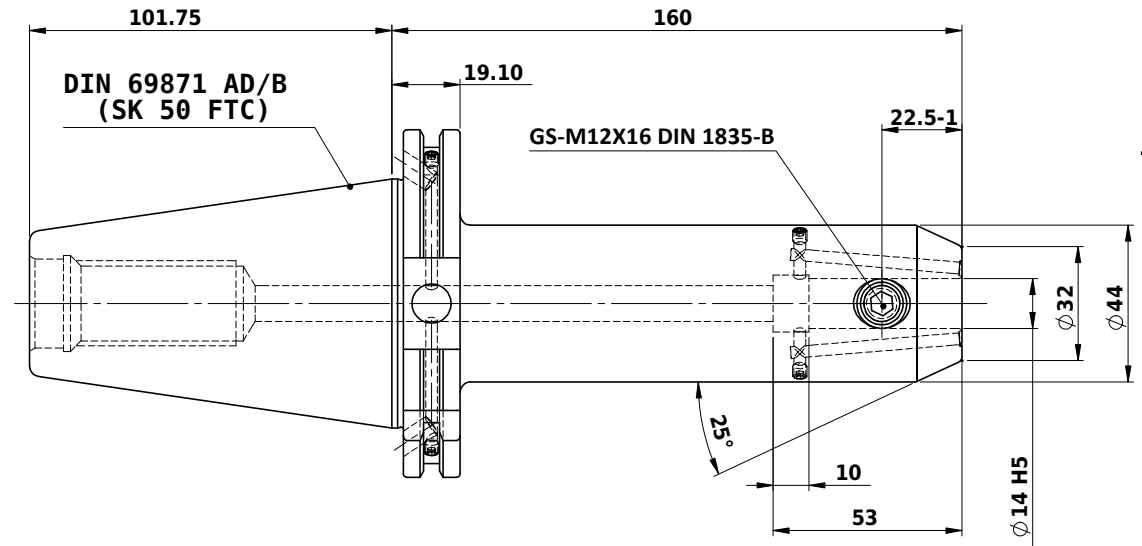
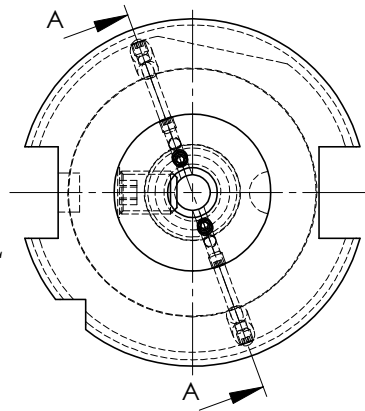
SCREWS TO BE PACKED SEPERATELY
IN PLASTIC POUCH WITH LABEL & PUT INTO
WELDON BORE & THEN SEAL THE HOLDER WITH COVER

LABEL FOR PLASTIC BAGS:
Verschlusschraube
Grub Screw
M4 X 4mm x 2 mm

CUSTOMER APPROVAL REQUIRED	
APPROVED BY	
DATE	

FOR QUOTATION PURPOSE ONLY

Label :
2002366.1402
WELDON-AUFNAHME MIT KK
WELD.HOLDER COOL.CHANNEL
DIN69871 SK50 ADB
Wk 14 mm x 160 mm
G2.5 /25000 U/MIN








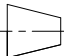
NOTE :

BALANCING 2.5G AT 25000 RPM

WEIGHT : 4.0 kg

MARKING : DIN 69871 AD/B SK50 WK14 H160
G2.5 25000 U/MIN

ITEM NO.	PART NUMBER	DESCRIPTION	QTY.
1	GS-M4X4	GRUB SCREW-(B.O)	6
2	GS-M12X16 DIN 1835-B	GRUB SCREW-(B.O)	1
3	FWS509H-EKH14160	SK50EK14160FWW	1

		μ m	0.012	0.025	0.05	0.1	0.2	0.4	0.8	1.6	3.2	6.3	12.5	25	50
		GRADES	N1	N2	N3	N4	N5	N6	N7	N8	N9	N10	N11	N12	
		SYMBOLS													
TOLERANCE			MATERIALS:				2017		NAME		DATE		2002366.1402		
FREE DIMENSIONS			16MnCr5				DRAWN		SVK		30/10				
TOLERANCE							CHECKED		RVL		30/10				
							APPROVED								
Dimns.	Dia	Length					SCALE : NTS		QTY. :		DRAWING No. FWS509H-EKH14160				
0.5 to 3	± 0.05	± 0.10													
3 to 6	± 0.10	± 0.15													
6 to 30	± 0.15	± 0.20													
30 to 120	± 0.20	± 0.25	PART NAME:								REV. 00				
120 to 500	± 0.30	± 0.50	SK50EK14160FWW				FWS509H-EKH14160								