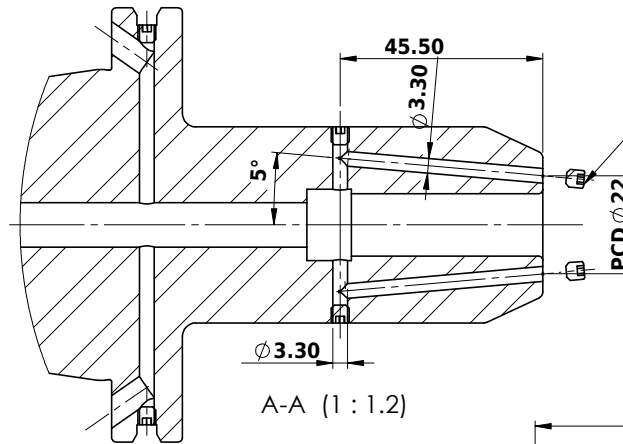


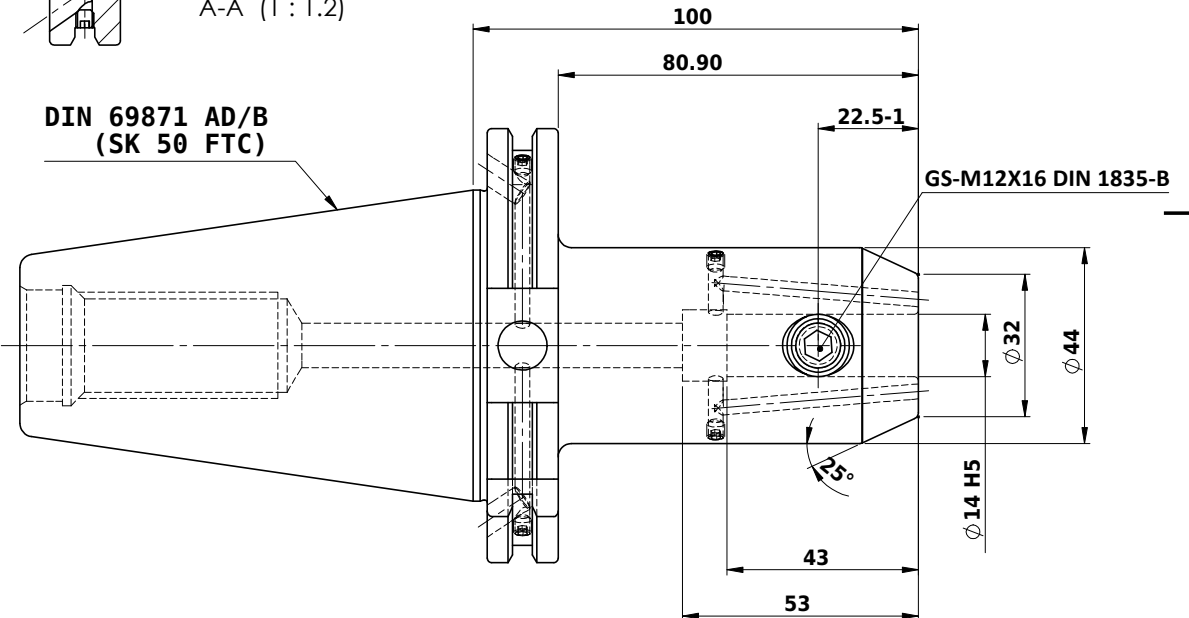
Rev.No.	Ch.Let	Alterations	Date	Sign.	Appd.






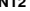

Verschlussschraube
Grub Screw
M4 X 4mm x 2 mm

APPROVED BY	
DATE	

DIN 69871 AD/B
(SK 50 FTC)



ITEM NO.	PART NUMBER	DESCRIPTION	QTY.
2	GS-M4X4	GRUB SCREW-(B.O)	6
2	GS-M12X16 DIN 1835-B	GRUB SCREW-(B.O)	1
3	FWS509H-EKH14100	SK50EK14100FWW	1

			μ m	0.012	0.025	0.05	0.1	0.2	0.4	0.8	1.6	3.2	6.3	12.5	25	50
			GRADES	N1	N2	N3	N4	N5	N6	N7	N8	N9		N10	N11	N12
			SYMBOLS													
TOLERANCE			MATERIALS: 16MnCr5		2017		NAME		DATE		2002366.1401					
FREE DIMENSIONS					DRAWN		ELA		03/05							
TOLERANCE					CHECKED		RVL		03/05							
Dimms.					APPROVED				-							
Dia					SCALE : NTS		QTY. :									
Length																
0.5 to 3			± 0.05		± 0.10											
3 to 6			± 0.10		± 0.15											
6 to 30			± 0.15		± 0.20											
30 to 120			± 0.20		± 0.25											
120 to 500			± 0.30		± 0.50											
PART NAME:									DRAWING No.						REV.	
SK50EK14100FWW									FWS509H-EKH14100						00	