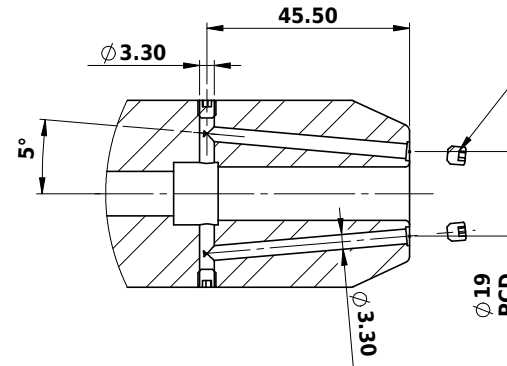
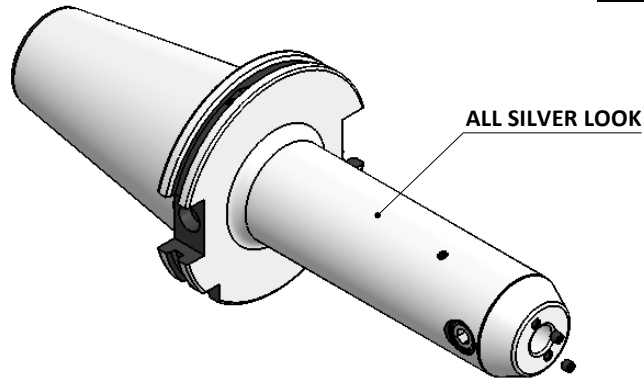


**All Dimensions are in MM**

Rev.No.	Ch.Let	Alterations	Date	Sign.	Appd.



SCREWS TO BE PACKED SEPERATELY  
IN PLASTIC POUCH WITH LABEL & PUT INTO  
WELDON BORE & THEN SEAL THE HOLDER WITH COVER

**LABEL FOR PLASTIC BAGS:**  
Verschlusschraube  
Grub Screw  
M4 X 4mm x 2 mm

CUSTOMER APPROVAL REQUIRED	
APPROVED BY	
DATE	

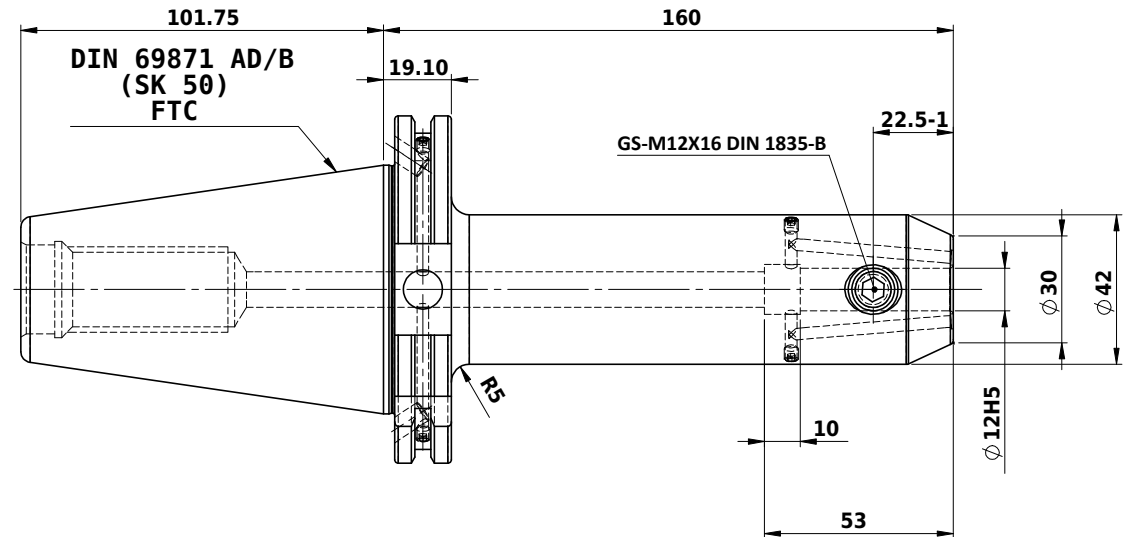
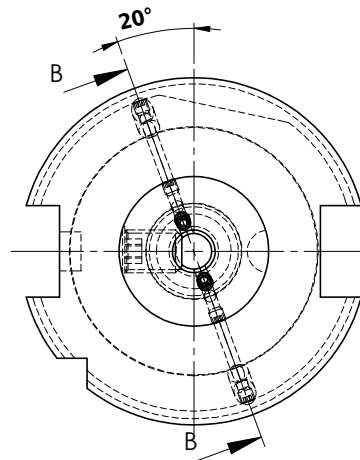
FOR QUOTATION PURPOSE ONLY

B-B (1 : 1.2)

**Label :**  
2002366.1202  
WELDON-AUFNAHME MIT KK  
WELD.HOLDER COOL.CHANNEL  
DIN69871 SK50 ADB  
Wk 12 mm x 160 mm  
G2.5 / 25000 U/MIN

**NOTE :**  
BALANCING 2.5G AT 25000 RPM  
WEIGHT : 3.93 kg

**MARKING : DIN 69871 AD/B SK50 WK12 H160**  
G2.5 25000 U/MIN



ITEM NO.	PART NUMBER	DESCRIPTION	QTY.
1	GS-M4X4	GRUB SCREW-(B.O)	6
2	GS-M12X16-DIN 1835-B	GRUB SCREW-(B.O)	1
3	FWS509H-EKH12160	SK50EK12160FWW	1

		μ m	0.012	0.025	0.05	0.1	0.2	0.4	0.8	1.6	3.2	6.3	12.5	25	50
		GRADES	N1	N2	N3	N4	N5	N6	N7	N8	N9	N10	N11	N12	
		SYMBOLS	▽▽▽	▽▽	▽	▽	▽	▽	▽	▽	▽	▽	▽	▽	
TOLERANCE		MATERIALS:		2017	NAME	DATE	2002366.1202								
FREE DIMENSIONS		16MnCr5		DRAWN	SVK	30/10									
TOLERANCE				CHECKED	RVL	30/10									
				APPROVED											
Dimns.		Dia	Length	SCALE : NTS		QTY. :	PART NAME:		DRAWING No.		REV.				
0.5 to 3		± 0.05	± 0.10	SK50EK12160FWW			FWS509H-EKH12160								
3 to 6		± 0.10	± 0.15												
6 to 30		± 0.15	± 0.20												
30 to 120		± 0.20	± 0.25												
120 to 500		± 0.30	± 0.50												