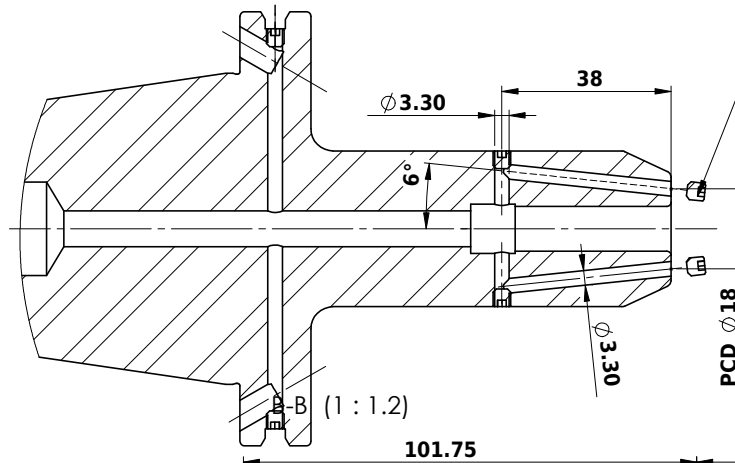


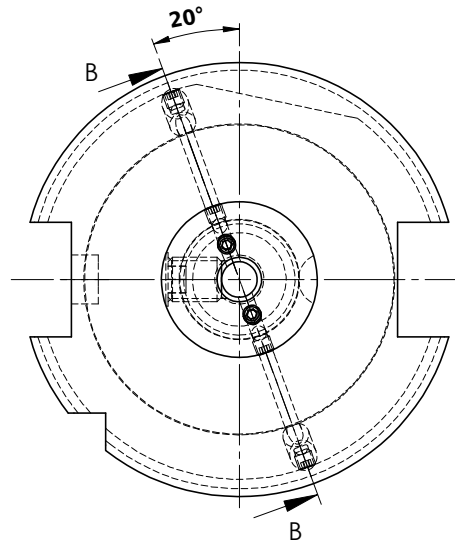
Rev.No.	Ch.Let	Alterations	Date	Sign.	Appd.



**LABEL FOR PLASTIC BAGS:**  
Verschlussschraube  
Grub Screw  
M4 X 4mm x 2 mm

<b>CUSTOMER APPROVAL REQUIRED</b>	
<b>APPROVED BY</b>	
<b>DATE</b>	

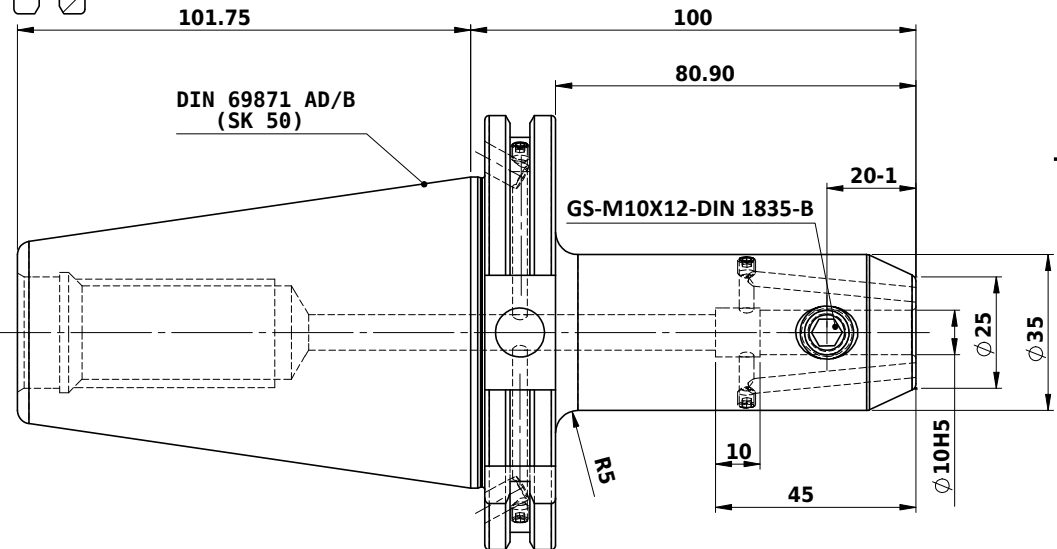
**FOR QUOTATION PURPOSE ONLY**




**NOTE :**  
**BALANCING 2.5G AT 25000 RPM**  
**WEIGHT :3.2 kg**

**MARKING : DIN 69871 AD/B SK50 WK10H100  
G2.5 25000 U/MIN**

ITEM NO.	PART NUMBER	DESCRIPTION	QTY.
1	GS-M10X12-DIN1835-B	GRUB SCREW-(B.O)	1
2	GS-M4X4	GRUB SCREW-(B.O.)	6
3	FWS509H-EKH10100	SK50EK10100FWW	1



			μ m	0.012 ✓	0.025 ✓	0.05 ✓	0.1 ✓	0.2 ✓	0.4 ✓	0.8 ✓	1.6 ✓	3.2 ✓	6.3 ✓	12.5 ✓	25 ✓	50 ✓
			GRADES	N1 N2 N3 N4				N5 N6	N7 N8 N9	N10 N11	N12					
			SYMBOLS	▽▽▽▽				▽▽▽▽	▽▽			▽	~			
TOLERANCE			MATERIALS:													
FREE DIMENSIONS			16MnCr5		2017		NAME		DATE		2002366.1001					
TOLERANCE					DRAWN		ELA		22/03							
					CHECKED		RVL		22/03							
					APPROVED											
					SCALE : NTS		QTY. :									
Dimns.	Dia	Length														
0.5 to 3	± 0.05	± 0.10														
3 to 6	± 0.10	± 0.15														
6 to 30	± 0.15	± 0.20	PART NAME:							DRAWING No.					REV.	
30 to 120	± 0.20	± 0.25	SK50EK10100FWW							FWS509H-EKH10100					00	
120 to 500	± 0.30	± 0.50														