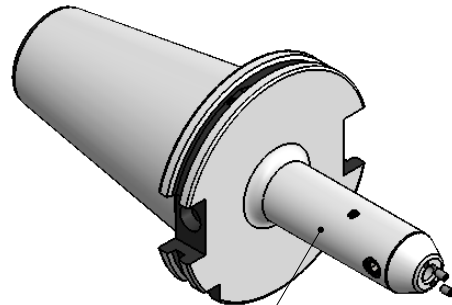
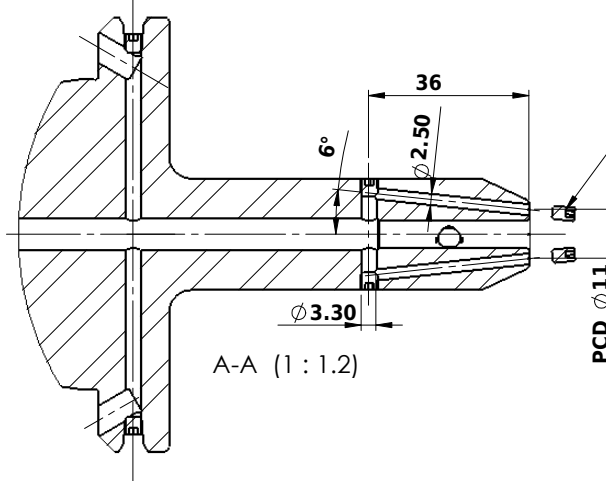


**All Dimensions are in MM**



ALL SILVER LOOK



SCREWS TO BE PACKED SEPARATELY  
IN PLASTIC POUCH WITH LABEL & PUT INTO  
WELDON BORE & THEN SEAL THE HOLDER WITH COVER

**LABEL FOR PLASTIC BAGS:**  
Verschlusschraube  
Grub Screw  
M3 X 5mm x 1.5 mm

CUSTOMER APPROVAL REQUIRED

APPROVED BY

DATE

FOR QUOTATION PURPOSE ONLY

Label :  
2002366.0601

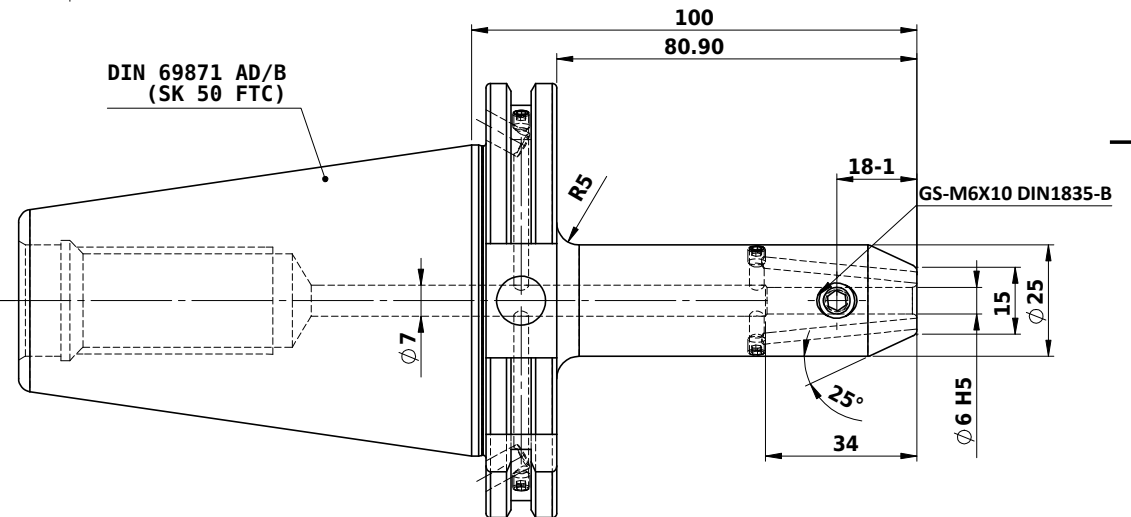
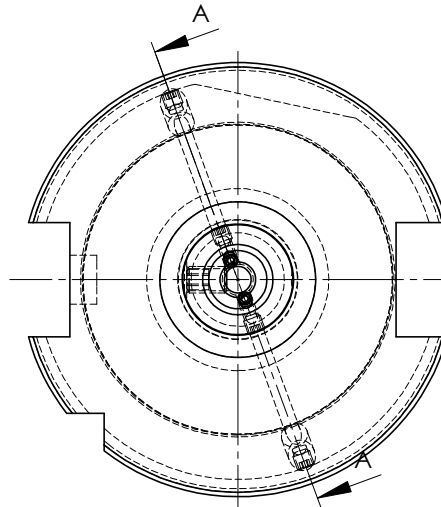
WELDON-AUFNAHME MIT KK  
WELD.HOLDER COOL.CHANNEL  
DIN69871 SK50 ADB  
Wk 6 mm x 100 mm  
G2.5 / 25000

NOTE :

BALANCING 2.5G AT 25000 RPM

WEIGHT :3 kg

MARKING : DIN 69871 AD/B SK50 WK06H100  
G2.5 25000 U/MIN



ITEM NO.	PART NUMBER	DESCRIPTION	QTY.
1	GS-M4X4	GRUB SCREW-(B.O)	2
2	GS-M6X10-DIN1835-B	GRUB SCREW (B.O.)	1
3	GS-M3X5	GRUB SCREW - M3X5	2
4	FWS509H-EKH06100	SK50EK06100FWW	1
5	GS-M4X4	GRUB SCREW-(B.O.)	2

		$\mu$ m	0.012	0.025	0.05	0.1	0.2	0.4	0.8	1.6	3.2	6.3	12.5	25	50
		GRADES	N1	N2	N3	N4	N5	N6	N7	N8	N9	N10	N11	N12	
		SYMBOLS													
		MATERIALS:	2017	NAME	DATE										
		FREE DIMENSIONS TOLERANCE	DRAWN	ELA	03/05										
		Dimns.	Dia	Length	CHECKED	RVL	03/05								
		0.5 to 3	$\pm 0.05$	$\pm 0.10$	APPROVED										
		3 to 6	$\pm 0.10$	$\pm 0.15$	SCALE : NTS	QTY. :									
		6 to 30	$\pm 0.15$	$\pm 0.20$											
		30 to 120	$\pm 0.20$	$\pm 0.25$											
		120 to 500	$\pm 0.30$	$\pm 0.50$											
		PART NAME:	SK50EK06100FWW				DRAWING No.				FWS509H-EKH06100				REV.
															00

2002366.0601